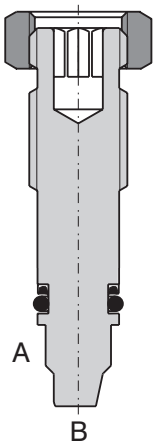


- Screw-in cartridge design
- Use :
  - Metering in one direction
  - Metering in both directions
- Flow rate set by adjustment screw internal to hexagon lock-nut

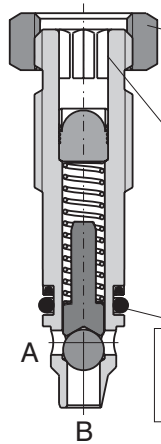


**Functional Description**

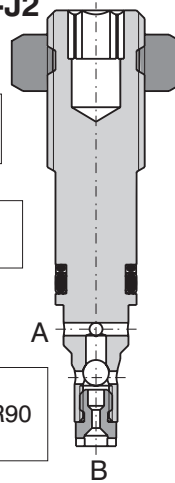
**VSV2-1**



**VSV2-J1**



**VSV2-J2**



Lock-nut outside HEX 19  
Screw inside HEX 6  
Seals  
6,73x9,43x1,14 NBR90  
6,9x1,8 NBR70

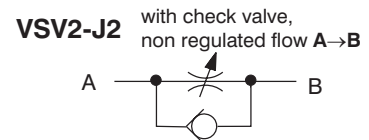
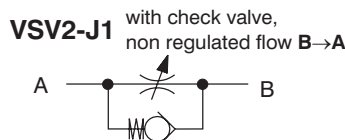
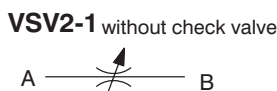
Throttle valve VSV2 is used to control the flow in a hydraulic system in one or both directions.

- 1) A higher sensitivity control is achieved by using the M12x1 screw thread
- 2) After loosening the lock nut the valve may be screwed out only up to the red marked safety notch; otherwise the valve could get completely unscrewed leading to working fluid escape.

**Ordering Code**

<b>Screw-in Cartridge Throttle Valve</b>		<b>VSV2</b> - <input type="checkbox"/> / <input type="checkbox"/>	<b>Thread</b>
<b>1</b>	without check valve	<b>M12x1</b>	<b>M12x1</b>
<b>J1</b>	with check valve, non regulated flow B→A		
<b>J2</b>	with check valve, non regulated flow A→B		

**Functional Symbols**



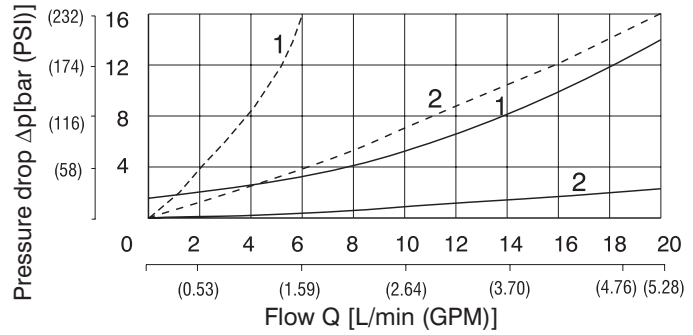
**Technical Data**

Nominal size	mm	M12x1
Max. operating pressure	bar (PSI)	320 (4641)
Hydraulic fluid		Hydraulic oils of power classes (HL, HLP) to DIN 51 524
Fluid temperature range	° C (° F)	-30 ... +100 (-22 ... +212)
Viscosity range	mm <sup>2</sup> /s	20 ... 400
Maximum degree of fluid contamination		Class 21/18/15 to ISO 4406 (2006)
Weight	kg (lbs)	0,11 (0.243)
Mounting position		optional

## Δp Characteristics

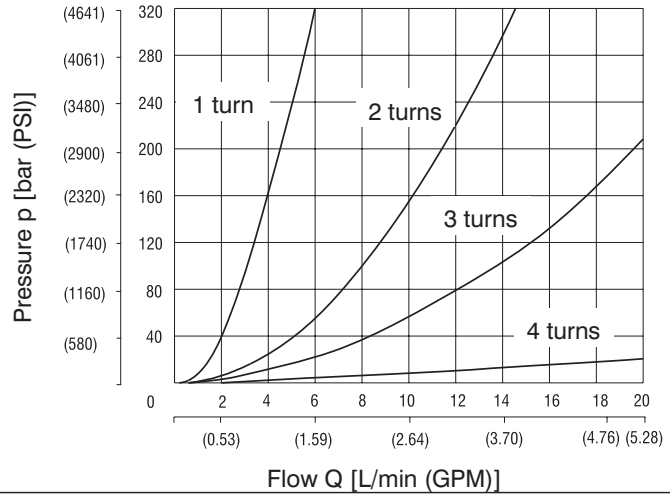
Measured at  $v = 32 \text{ mm}^2/\text{s}$

- VSV2-J1** - Flow direction B → A ————  
**VSV2-J2** - Flow direction A → B - - - - -  
 1 - Throttle valve closed  
 2 - Throttle valve open



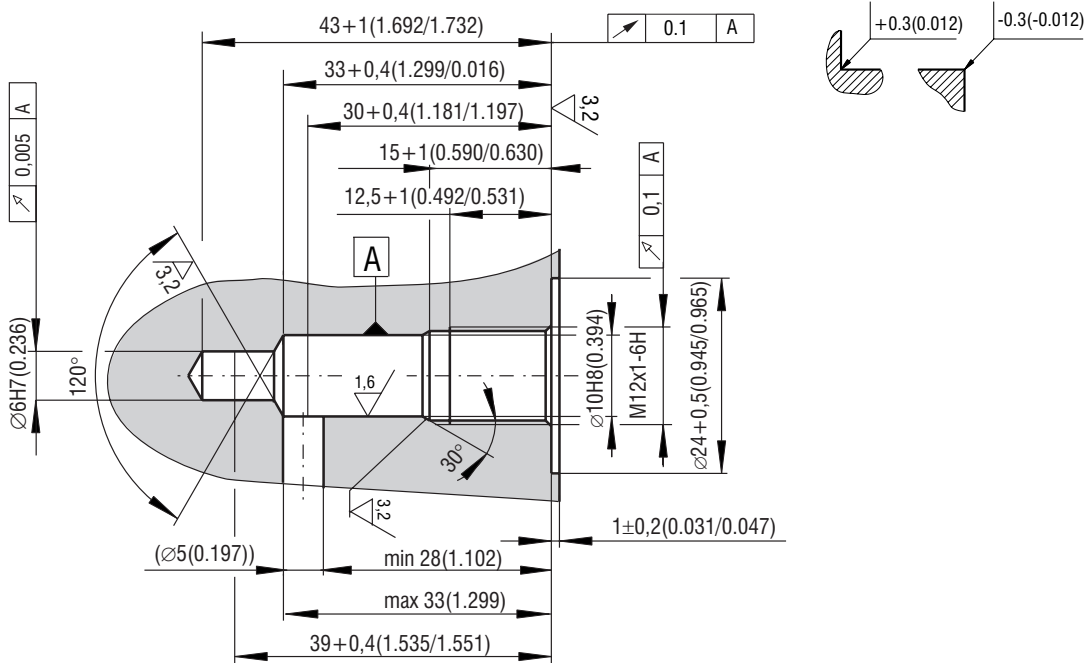
## p-Q Characteristics

Measured at  $v = 32 \text{ mm}^2/\text{s}$



## Cavity

Dimensions in millimeters (inches)



## Caution!

- The packing foil is recyclable.
- The technical information regarding the product presented in this catalogue is for descriptive purposes only. It should not be construed in any way as a guaranteed representation of the product properties in any legal sense.

ARGO-HYTOS s.r.o. CZ - 543 15 Vrchlaví  
 Tel.: +420-499-403111, Fax: +420-499-403421  
 E-mail: sales.cz@argo-hytos.com  
 www.argo-hytos.com